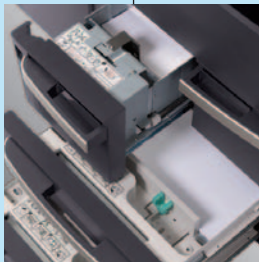


CS 820
CS 620

Black & White Multifunctional Systems

DOCUMENT IMAGING WITH CONFIDENCE.



CS 820/620 | Black & White Multifunctional Systems

Document imaging is an essential task of every business. The **Copystar CS 820/620 Black & White Multifunctional Systems** put you in control of printing, copying, and scanning, with high-speed performance and maximum productivity. These multifunctionals are **true powerhouses**, combining **exceptional imaging** and a robust array of features designed to **improve efficiency** and document workflow – all in a sleek black and silver exterior design.

Developed with the award-winning imaging system that completed an unprecedented **2.5+ Million Page Reliability Evaluation** from Buyers Laboratory, Inc., the CS 820/620 deliver the **ultra-reliability, power** and **productivity** that large workgroups and fast-paced departments expect from high-volume devices. The power of fast speed and consistent output quality, combined with unique long life technology and solution integration capabilities engineered into every CS 820/620 MFP, assure **superior document imaging** every time. ***That's Copystar Confidence!***

Copystar: Only from Kyocera

All Copystar products are engineered with Kyocera technology. Since 1959, Kyocera has successfully developed innovative technologies that have helped set industry standards for engineering and quality. In the field of document imaging, Kyocera Mita Corporation is a well-known and respected provider of leading-edge multifunctional products, laser printers, as well as software and network solutions to organizations of all sizes and specializations. Its award-winning technology incorporates long life imaging components that can dramatically lower your total cost while providing the high productivity and exceptional image quality that your business demands. Kyocera continually strives to raise the bar for excellence in both products and service including:

- **Award-winning ultra-reliability**
- **Easy-to-use technology**
- **Environmentally friendly devices**
- **High standards of integrity**
- **Commitment to quality control**
- **Unsurpassed performance**



Performance at Its Best!

AWARD-WINNING RELIABILITY FOR DOCUMENT IMAGING YOUR BUSINESS CAN DEPEND ON

The reliability factor sets Copystar apart from the competition. Copystar MFPs are consistently recognized by industry analysts and users for their long life consumables and components, as well as unsurpassed preventive maintenance intervals.

- Innovative technology extends the **long life consumables** in the CS 820/620, reducing the frequency to replace major components
- **Industry-leading preventive maintenance intervals** reduce the overall frequency of service calls and maximize uptime
- The CS 820/620 incorporate Kyocera's patented **Amorphous Silicon drum technology**, with rated yields of 4.8 and 3.6 million pages respectively for a durable imaging system day-in and day-out
- **High maximum monthly volumes** set at 500,000 pages for the CS 820 and 350,000 pages for the CS 620, ensure busy work environments can efficiently meet critical demands and deadlines

Your business is your top priority, and you demand uncompromising dependability across your entire enterprise. The CS 820/620 deliver a winning, long-term solution for all your critical document imaging requirements.

It's ultra-reliability at its best!

MAKE THE RIGHT IMPRESSION WITH PROFESSIONAL FINISHING

Conveying a professional image is critical to your business, and your printed documents should make a statement. The CS 820/620 can be configured to enhance your printed communications with **various finishing features that bring flexibility to your output**, including multi-position stapling and hole punch. The optional booklet folder adds refinement, through the creation of saddle-stitched booklets either from the desktop or from hardcopy originals.

For highly active workgroups, an optional five-bin multi-tray allows multiple users to easily separate their finished documents into a designated tray, so their output is readily accessible when needed.



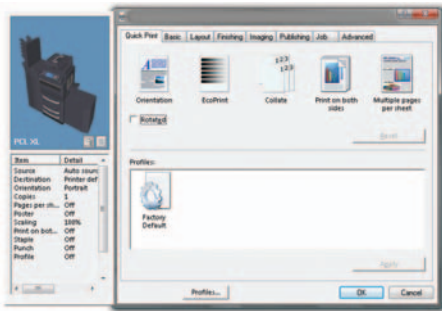
IMPRESSIVE PAPER CAPACITY

The CS 820/620 provide **outstanding paper capacity**, offering dual 525 sheet adjustable paper drawers, dual 1,500 sheet letter decks and a 100 sheet multi-purpose tray for a standard paper capacity of 4,150 sheets. For paper-intensive environments, the CS 820/620 can be configured with a choice of two 4,000 sheet large capacity trays, maximizing throughput capacity to an exceptional 8,150 sheets. You can print what you need, when you need it, without stopping to reload. ***Now that's high-performance!***

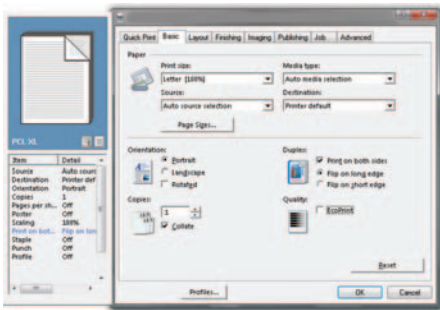


POWER AT THE DEVICE AND AT THE DESKTOP

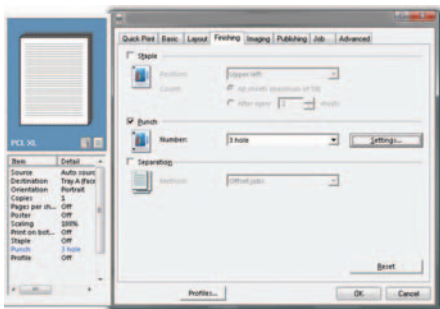
Count on the CS 820/620 to deliver results, whether you need to print multiple sets of a 100-page meeting report, statement stuffers announcing your new product, or ledger sized flow charts detailing your activities for the next month. When taking advantage of optional network print, our advanced **KX Driver** allows users to access the unique features integrated into each Copystar MFP from one common print driver.



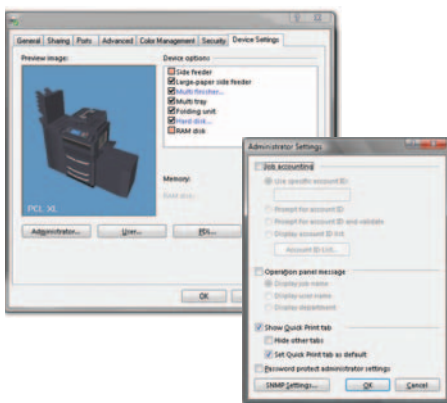
The KX Driver's **Quick Print Tab** gives you commonly used print features from one screen. Create and save a custom profile for statement stuffers and another for your flowcharts. Professionally finished documents are only a click away!



Using the KX Driver's **Basic Tab**, you can quickly and easily designate page attributes, such as print size, media type, paper source, and 2-sided printing, as well as the number of copies you need.



Speed up your finishing with the unique **Finishing Tab**, that lets you assign job features such as multi-position staple, sub-set stapling for complex reports, 2/3 hole punch, saddle-stitch booklets and more!



The **KX Properties Screen** puts administrators in control. Select settings, job accounting for department charge-backs, languages, page description languages, and auto configure any and all Copystar MFPs on the network.



FLEXIBLE CONFIGURATION OPTIONS



4,000 Sheet Large Capacity Tray

- Letter Sized Sheets
- 16 lb Bond – 90 lb Index

4,000 Sheet Large Capacity Tray

- Letter, Legal, or Ledger Sized Sheets (adjustable)
- 16 lb Bond – 90 lb Index

Power, Performance, Flexibility



3,000 Sheet Document Finisher

- Multi-Position Staple
- Optional 2 and 3 Hole Punch
- Optional 5 Bin Multi-Tray
- Optional Booklet Folder
- 16 lb Bond – 110 lb Index



Optional 5 Bin Multi-Tray for 3,000 Sheet Finisher

- 150 Pages per Bin
- Specify Trays for Multiple Users
- Letter to Ledger Sized Sheets
- Accepts Finished Output
- 13 lb Bond – 90 lb Index

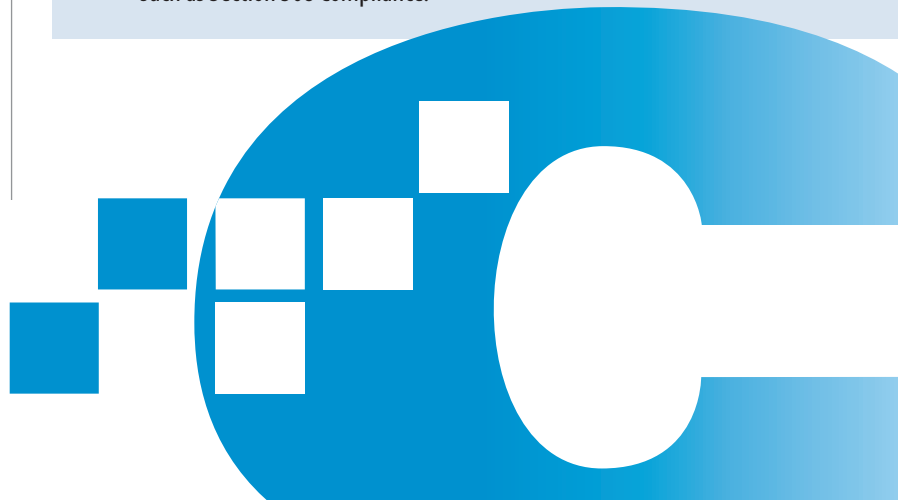


Optional Booklet Folder for 3,000 Sheet Finisher

- Folding up to 16 Sheets
- Saddle Stitch
- Letter, Legal, or Ledger Sized Booklets
- 16 lb Bond – 110 lb Index

PERFORMANCE WITHOUT COMPROMISE

- 1 Dual Scan Document Processor** – A high capacity of 260 sheets at network scan speeds up to a fast 100 images per minute improves department productivity – with the versatility to handle multiple paper sizes and mixed originals.
- 2 Advanced Finishing** – This robust finisher supports multi-position stapling, with options including 2/3 hole punch, multi-tray, and booklet folding, bringing advanced finishing needs in-house.
- 3 Versatile Paper Handling** – Standard duplex and a 4,150 sheet paper capacity from 5 sources enhances flexibility, with statement to ledger sized paper and paper weights up to 110 lb Index.
- 4 Network Print** – The high-performance 600MHz print system supports PCL and Postscript, and can connect to virtually any network environment.
- 5 Optional Large Capacity Trays** – For paper-intensive environments, the choice of 2 optional large capacity trays increases paper capacity to 8,150 sheets, reducing the frequency to reload paper.
- 6 Optional Network Scan** – Enhance your file sharing and archiving with advanced scanning capabilities: Scan to e-mail, Scan to Folder, and Scan to FTP.
- 7 High Capacity Toner** – A high capacity toner yield of 55,000 pages (at 6% coverage) means busy work environments will be replacing toner less frequently while working more productively.
- 8 High Yield Imaging Drum** – The industry leading, highly durable Amorphous Silicon drum developed by Kyocera has a rated yield of up to 4.8 million pages for maximum uptime.
- 9 Easy-to-Use Touch Screen Display** – Hard keys and the intuitive large touch screen display allow any user to navigate quickly and efficiently for all their copy and scan requirements.
- 10 Security & Compliance** – Flexible features help your business meet security objectives and other requirements, such as Section 508 Compliance.



Harness the Full Potential of Your Copystar MFP

MAXIMIZE YOUR IMAGING CAPABILITIES WITH NETWORK PRINT AND SCAN

Enhancing the functionality of the CS 820/620 with optional network printing and scanning systems will transform your business for any task – whether it's hardcopy or electronic. The CS 820/620 connect easily to any network and allow your business to work at optimum efficiency.

Network Printing

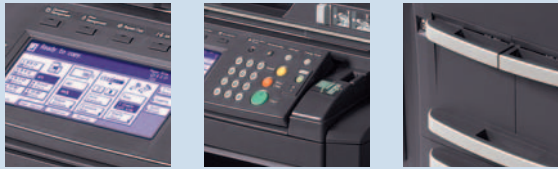
The extra-large paper capacity of the CS 820/620 makes them tailor made to meet the high volume demands of busy workgroups through their network printing option. With the optional print system, the CS 820/620 become powerful network printers, ensuring your electronic documents are printed efficiently the first time, every time by incorporating:

- A fast 600MHz print controller
- Productive output speeds
- Crisp 600 x 600 dpi imaging
- Standard PCL and PostScript page description languages
- The ability to connect to virtually any network

Enhanced Capabilities with Optional Network Scanning

Document scanning is a critical component to today's business. The CS 820/620 feature an impressive standard 260 Sheet Dual Scan Document Processor that quickly scans hardcopy originals in a single pass, at speeds up to 100 images per minute – among the fastest in its class. By adding the optional scan system, you can take advantage of high performance scanning features that will boost productivity within your enterprise.

- Scan to e-mail, Scan to Folder, Scan to FTP, TWAIN support
- 200 – 600 dpi resolution
- PDF and TIFF file formats



Section 508 Compliance requires all electronic and information technology products be accessible to individuals with disabilities. The CS 820/620 are equipped with an array of features that facilitate use, including:

- Large easy-to-view display
- Adjustable control panel
- Adjustable tilt document processor
- Easy-to-open and close paper drawers and decks
- Wide paper drawer handles with top and bottom accessibility



Solutions to Maximize Performance

DOCUMENT CREATION & OUTPUT



Printing the business documents you create and use every day is essential for effective communication, both inside and outside your company. Solutions for Document Creation & Output improve workplace productivity and efficiency. Kyocera's native page description language, **PRESCRIBE**®, offers your business a flexible, on-demand printing solution for forms, letterhead and similar corporate documents. PRESCRIBE eliminates the cost and storage space associated with preprinted forms and will improve productivity on your important back-office applications.

Enhance your Windows® desktop through our **KX Driver** and **PDF Direct Print** for fast printing and full access to device features.

SECURITY & COMPLIANCE



Securing your business assets and maintaining confidentiality of data is a growing strategic initiative for many companies. Solutions addressing Security & Compliance are incredibly flexible to fit the needs of your diverse network and your company's printing, copying or scanning requirements.

A broad range of optional security solutions are available: Our **Data Security Kit** ensures your business critical information is never compromised; device printing features such as **Secure Print** and **Virtual Mailbox** require passwords to enable output directly at the device, and the KX Driver allows you to add a **Security Watermark** to your documents to deter unauthorized copying. Our server-based **PrintQ Manager Secure Job Release** allows users to access their secured documents stored at a server from any PrintQ manager-enabled Copystar MFP; and for businesses and organizations instituting **IPv6** (Internet Protocol version 6) to their infrastructure, an optional IPv6 converter for the CS 820/620 ensures compliance and security standards can be met.

DOCUMENT MANAGEMENT



Scanning, routing, archiving and retrieving documents streamline any company's workflow. The CS 820/620 provide your business with easy-to-use scan features, while also offering more robust Document Management solutions such as our **KYOcapture** and **KYOcapture Express**. KYOcapture integrates with many of the industry's best-recognized document management systems such as SentryFile, LaserFiche®, Documentum®, SharePoint® and more.

For businesses requiring '**on-demand**' access of documents at the MFP, our **e-MPS** and **Document Storage** for the CS 820/620 are critical features that allow users to store electronic and hardcopy documents directly at the MFP for quick retrieval.

These Document Management Solutions are scalable and flexible for your business, delivering a solution that fits your company's requirements today, and an upgrade path for your growing requirements tomorrow.

NETWORK & DEVICE MANAGEMENT



Our suite of Network & Device Management Solutions provides your IT infrastructure with the essential tools it needs to manage and maintain your output devices, keeping your operation running efficiently. This comprehensive set of value-added utilities and software include the PC-based **KMnet Viewer** and web-based **KMnet Admin** for device management, cost control and department accounting; and **PrintQ Manager**, a device management solution that incorporates print queue monitoring and server-based security for output of documents.

CREATING PROACTIVE BUSINESS SOLUTIONS WHILE WORKING TO KEEP THE FUTURE GREEN

Kyocera Mita America is committed to pursuing a harmonious balance between economic development and environmental preservation. We adhere to the goals of our worldwide Environmental Action Plan in developing office solutions with environmentally friendly and superior energy- and supply-saving features, without compromising your productivity.

- Long Life Components and Consumables
- Energy Star Compliant
- Restriction of Hazardous Substances (RoHS) Compliant
- Fast Warm-up Time
- Power-Saving Sleep Mode
- Duplex and Combine Copy Modes
- Low Noise Levels
- Minimal Ozone Emissions



Kyocera Mita America was awarded the 2008 Excellence in Partnership (EIP) award for Industry Green Contractor from the U.S. Government's General Services Administration (GSA) in recognition for its environmental commitment. The GSA Integrated Workplace Acquisition Center (IWAC) Center, in the category of technologies and electronics, also recognized Kyocera with the Evergreen Award as an environmentally conscious business with strong efforts in recycling, affirmative procurement, and waste reduction. Additionally, our U.S. facility's Environmental Management System (EMS) has achieved ISO14001:2004 certification, which distinguishes corporations that effectively manage how their activities, products and services impact the environment.

CS 820/620



Shown with optional 4,000 Sheet Adjustable LCT, 3,000 Sheet Finisher with Multi-Tray and Booklet Folder



The CS 820/620 come standard with a productive Dual Scan Document Processor (maximum capacity of 260 sheets)



Standard paper capacity of the CS 820/620 is an impressive 4,150 sheets, featuring dual 1,500 Sheet Letter Decks and dual 525 Sheet Adjustable Paper Drawers



The CS 820/620 feature High Capacity Toner rated for 55,000 pages (6%). Replacing toner containers is a simple task for any user.

Basic Specifications

Configuration	Black & White Multifunctional System - Copy / Optional Print / Optional Scan
Pages Per Minute	CS 820 — Letter: 82 ppm; Legal: 50 ppm; Ledger: 41 ppm CS 620 — Letter: 62 ppm; Legal: 37 ppm; Ledger: 31 ppm
Warm-up Time	30 Seconds or Less
First Copy/Print Out Time	CS 820: 2.9 Seconds; CS 620: 3.6 Seconds
Copy Resolution	1,800 x 600 dpi (interpolated); 600 x 600 dpi
Copy/Scan Memory / Hard Disk Drive (HDD)	128 MB RAM / 40 GB HDD
Duplex	Standard Stackless, Statement to Ledger, 16 - 43 lb Bond
Electrical Requirements / Weight	120V, 60Hz, 16.0 A / 414.5 lbs (mainframe and DP)
Max Monthly Duty Cycle	CS 820: 500,000 Pages Per Month; CS 620: 350,000 Pages Per Month

Paper Supply

Standard Paper Sources	Dual 525 Sheet Universal Drawers, Dual 1,500 Sheet Letter Decks, 100 Sheet MPT, Auto Selection / Switching, Add Paper While Running
Optional Paper Sources	PF-650(B): 4,000 Sheet Large Capacity Tray - Letter PF-660(B): 4,000 Sheet Large Capacity Tray - Letter to Ledger
Paper Capacity	Standard: 4,150 Sheets; Maximum: 8,150 Sheets
Paper Size	5.5" x 8.5" - 11" x 17" (Statement to Ledger)
Paper Weight	12 lb Bond - 90 lb Index; MPT: 13 lb Bond - 110 lb Index
Input Materials	Bond Paper, Recycled Paper, Transparencies, Labels, Envelopes

Document Processor

Type / Capacity	Dual Scan Document Processor / 260 Sheets (Letter)
Scan Speed for Copy	82 ipm
Acceptable Originals / Weights	5.5" x 8.5" - 11" x 17", Mixed Size Originals / 13 - 43 lb Bond

Duplex

Paper Size	5.5" x 8.5" - 11" x 17" (Statement to Ledger)
Paper Weight	16 - 43 lb Bond
Duplex Modes	1:2; 2:2; Book:2; 2:1

Copy Specifications

Image Mode	Text, Photo, Text/Photo, Auto, Manual, Map
Continuous Copy	1 - 9,999 / Auto Reset to 1
Additional Copy Features	Auto Center, Magnification and Paper Select, Batch Copy, Booklet Mode, Book Mode, Combine Image, Covers, Inserts, Border Erase, Image Overlay, Image Rotate, Positive/Negative Reverse, Margin Shift, Mirror Image, Memo Mode, Modify Copy, Proof Copy, Page Numbering, Transparency Mode, XY Zoom, Shortcut Keys

Job Management	Job Interrupt, Job Build, 9 Job Programs, Repeat Copy, 1,000 Department Codes
Magnification / Zoom	Full Size, 5 Reduction, 5 Enlargement Preset Ratios, 25 - 400% in 1 step increments
HDD Storage	Shared Data Box, Synergy Box, Forms Box

Print Specifications

Controller	PowerPC 750CXe / 600MHz
Printer Memory	Standard 64MB RAM, upgradable to 576MB; Optional e-MPS HDD
PDLs / Emulations	PRESCRIBE, PCL6 (5e, XL), KPDL3 (PS3), KC-GL, IBM ProPrinter X24e, Epson LQ-850, Diablo 630, Line Printer
Fonts	136 KPDL3, 80 PCL6, 1 Bitmap
Windows OS Compatibility	Windows 2000 / XP / 2003 / Vista / 2008
Mac OS Compatibility	Mac OS 10.x
UNIX OS Compatibility	Sun OS4.1.x; Solaris 2.x; AIX; HP-UX (LPR)
Interfaces	Standard: 10/100BaseTX, Hi-Speed USB 2.0, Parallel IEEE1284, KUIO-LV Slots (2)
Network Print and Supported Protocols	TCP/IP, IPX/SPX, AppleTalk, NetBEUI
Drivers	KX Driver, Mini Driver, PPD for Mac, PPD for UNIX
Utilities	PRESCRIBE Utilities, PDF Direct Print, KMnet Admin, KMnet for Accounting, KMnet Viewer, Status Monitor
Additional Print Features	e-MPS Features (Secure Print, Job Storage, Virtual Mailbox) (requires Optional HD-10 e-MPS HDD)

Optional Print System (W)

Scan Specifications

Scan Resolutions	200, 300, 400, 600 dpi
Network Scan Speed	600 dpi - Simplex: 82 ipm / Duplex: 82 ipm; 400, 300 and 200 dpi - Simplex: 100 ipm / Duplex: 110 ipm
File Formats	PDF, TIFF
Connectivity / Supported Protocols	10/100BaseTX / TCP/IP
Scanning Functions	Scan to Folder, Scan to e-mail, Scan to FTP, TWAIN Scan
Driver	TWAIN Driver

Optional Scan System (H)

Optional 3,000 Sheet Finisher

Stack / Staple Capacity	Main Tray: 3,000 Sheets; Sub Tray: 200 Sheets
Paper Size	Main Tray: 8.5" x 11" - 11" x 17"; Sub Tray: 5.5" x 8.5" - 11" x 17"
Paper Weight	16 lb Bond - 110 lb Index
Edge Staple Position	3 Positions: Top Left, Bottom Left, Center Bind
Acceptable Weights for Staple	16 - 28 lb Bond
Optional Multi-Tray	MT-1(B): Includes 5 Trays; Supports 13 lb Bond - 90 lb Index Stack Capacity per Tray: 150 Sheets: 5.5" x 8.5", 8.5" x 11"; 50 Sheets: 8.5" x 14", 11" x 17"

DF-650(B)

Optional Punch

Optional Punch	PH-4A: 2 and 3 Hole Punch Unit, Supports 8.5" x 11" - 11" x 17", 13 lb Bond - 110 lb Index
Optional Saddle Stitch / Fold	BF-1(B): Supports 8.5" x 11", 8.5" x 14", 11" x 17", 16 lb Bond - 110 lb Index; Over 20 lb Bond Single Sheet Folding Capacity: 1-5 Sheets - 30 Booklets; 6-10 Sheets - 20 Booklets; 11-16 Sheets - 10 Booklets

Optional Large Capacity Trays

Paper Capacity	PF-650(B) and PF-660(B) 4,000 Sheets
Paper Size	PF-650(B): 8.5" x 11" PF-660(B): 8.5" x 11", 8.5" x 14", 11" x 17"
Paper Weight	16 lb Bond - 90 lb Index

Additional Options

KYOcapture, KYOcapture Express, Data Security Kit (B) Provides Security Overwrite, HD-10 e-MPS Printer Hard Disk Drive, IB-40, IB-40 (Type H) NIC supports IPv6 protocol, Copy Tray

Specifications and design are subject to change without notice.
For the latest on connectivity visit www.copystar.com.
All trademarks are the property of their respective owners.

Kyocera Mita America, Inc. Headquarters: 225 Sand Road, Fairfield, NJ 07004-0008, USA
©2009 Kyocera Mita America, Inc.

IC#855D400205

