

CS 221 | Black & White Multifunction Systems  
CS 181

DOCUMENT IMAGING WITH CONFIDENCE.



# Copystar CS 221/181 Black & White MFPs:

The Copystar CS 221/181 Black & White Multifunctional Systems deliver the essential functionality and performance with an exceptional array of features including standard network print and copy, and optional network scan and fax. If your organization

## AWARD-WINNING RELIABILITY FOR DOCUMENT IMAGING YOUR BUSINESS CAN DEPEND ON

The reliability factor sets Copystar apart from the competition. Copystar MFPs are consistently recognized by industry analysts and users for their long life consumables and components, as well as unsurpassed maintenance intervals.

- Innovative technology extends our **long life consumables**, reducing the frequency to replace major components
- **Industry-leading preventive maintenance intervals** reduce the overall frequency of service calls and maximize uptime
- The CS 221/181 incorporate Kyocera's long life **Organic Photoconductor (OPC) drum technology**, with a rated yield of 150,000 pages for a durable imaging system day-in and day-out
- **High maximum monthly volumes** set at 30,000 pages for the CS 221 and 20,000 pages for the CS 181 ensure busy work environments can efficiently meet critical demands and deadlines

Your business is your top priority, and you demand uncompromising dependability across your entire enterprise. The CS 221/181 deliver a winning, long-term solution for all your critical document imaging requirements. ***That's Copystar Confidence!***

### High Performance Document Processor

A 50 sheet document processor enhances busy workgroup productivity while handling multiple paper sizes with ease.

### Document Finishing

This finisher supports single position stapling up to 30 letter sheets for professional looking output every time.

### Efficient Duplex

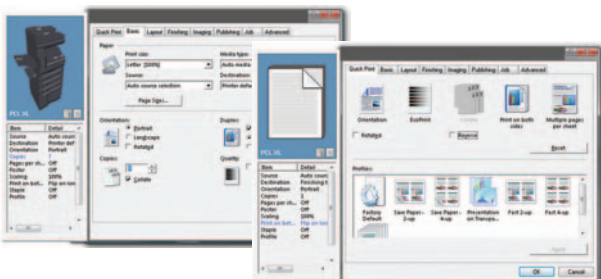
Optional stackless duplex helps you reduce paper consumption by producing 2-sided originals on stock up to 28 lb Bond from the paper trays.

### Exceptional Paper Capacity

For more paper-intensive work environments, you can add up to two (CS 221) or three (CS 181) additional paper trays to boost paper capacity to a maximum 1,300 sheets.

## POWER AT THE DEVICE AND AT THE DESKTOP

Copystar's advanced **KX Driver** allows users to take full advantage of unique print features integrated into each CS 221/181 MFP from one common print driver.



## CREATING PROACTIVE BUSINESS SOLUTIONS WHILE

Kyocera Mita America is committed to pursuing a harmonious balance between economic growth and environmental stewardship. As part of our worldwide Environmental Action Plan in developing office solutions with energy efficiency, we strive to achieve our goals without compromising your productivity.

- Long Life Components and Consumables
- Energy Star Compliant
- Restriction of Hazardous Substances (RoHS) Compliant
- Fast Warm-up Time



Kyocera Mita America was awarded the 2008 Excellence in Partnership (EIP) award from the General Services Administration (GSA) in recognition for its environmental commitment. The GSA has recognized Kyocera's technologies and electronics, also recognized Kyocera with the Evergreen Award as a leader in green technologies, affirmative procurement, and waste reduction. Additionally, our U.S. facility's ISO 14001 certification, which distinguishes corporations that effectively manage how their a

# Power Performance, Flexibility

ance that your business workgroups require. Dependable and productive, the CS 221/181 offer an on is looking for true multi-tasking devices, the CS 221/181 are the solutions that deliver exceptional results.



## Standard Network Print

The 500MHz print system supports PCL and Postscript and can connect to virtually any network environment.

## Easy-to-Use Control Panel

Intuitive control panel allows you to copy, scan, and fax documents quickly and efficiently.

## Optional Network Scan

Enhance your file-sharing and archiving with advanced scanning capabilities: Scan to e-mail and Scan to PC in PDF and TIFF formats.

## Optional Network Fax

Add G3 Fax or Network Fax (with Scan System) for a truly efficient, all-in-one communication device.

## HIGH PERFORMANCE & DESIGN

- **Flexible Design for any Work Environment.**  
The CS 221/181 are scalable solutions with options including a document processor, multiple paper trays, and the ability to add network scan and fax.
- **High Yield Toner.** With a high yield toner capacity of 15,000 pages (6% coverage), busy work environments will be replacing toner less frequently with the CS 221/181.
- **Proven Technology & Ultra Reliability.**  
Our award-winning technology incorporates long life imaging components that can dramatically lower your total cost, while providing high productivity and exceptional image quality.
- **Ultimate Document Creation & Output Efficiency.**  
PRESCRIBE® offers your business a flexible, on-demand printing solution for forms, letterhead and similar corporate documents. PRESCRIBE eliminates the cost and storage space associated with preprinted forms.
- **Integrated Solutions.** Leverage the full potential of your MFP with tools and utilities designed to maximize your security, management and accounting capabilities.

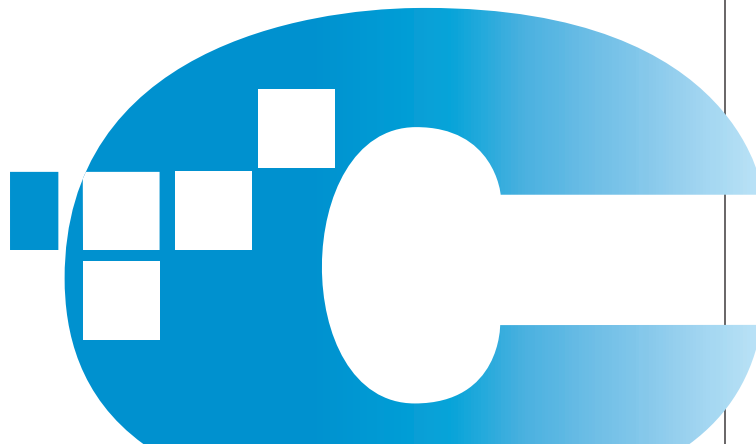
## WORKING TO KEEP THE FUTURE GREEN

economic development and environmental preservation. We adhere to the goals environmentally friendly and superior energy- and supply-saving features,



- Power-Saving Sleep Mode
- Duplex and Combine Copy Modes
- Low Noise Levels
- Minimal Ozone Emissions

or Industry Green Contractor from the U.S. Government's General Services Integrated Workplace Acquisition Center (IWAC) Center, in the category of an environmentally conscious business with strong efforts in recycling, Environmental Management System (EMS) has achieved ISO14001:2004 activities, products and services impact the environment.



# CS 221/181



CS 181 standard configuration with optional document processor  
22.4" W x 23.4" D x 25.0" H



CS 221 with optional document processor, additional paper drawers, internal finisher, and copy stand



Intuitive control panel allows you to copy, scan, and fax documents quickly and efficiently



Easy-to-replace toner containers

## Basic Specifications

Configuration	Black & White Multifunctional System - Standard Print and Copy / Optional Scan / Optional Fax
Pages Per Minute	CS 221: Letter: 22 ppm; Legal: 11 ppm; Ledger: 10 ppm CS 181: Letter: 18 ppm; Legal: 8 ppm; Ledger: 8 ppm
Warm-up Time	17.2 Seconds or Less
First Copy / Print Out Time	5.7 Seconds or Less
Copy Resolution	600 x 600 dpi
Copy / Scan Memory	64 MB RAM, upgradable to 192MB
Duplex	Optional Stackless, Statement to Ledger, 16 - 28 lb Bond
Electrical Requirements	120V, 60Hz, 9.0A 220-240V, 50/60Hz, 5.0A
Dimensions / Weight	CS 221: 22.4" W x 23.4" D x 23.9" H / 88.4 lbs (mainframe) CS 181: 22.4" W x 23.4" D x 19.8" H / 75.0 lbs (mainframe)
Max Monthly Duty Cycle	CS 221: 30,000 Pages per Month CS 181: 20,000 Pages per Month

## Paper Supply

Standard Paper Sources	CS 221: Dual 300 Sheet Universal Drawers, 100 Sheet MPT CS 181: 300 Sheet Universal Drawer, 100 Sheet MPT
Optional Paper Sources	300 Sheet Universal Paper Drawers (PF-420)
Paper Capacity	CS 221: Standard: 700 Sheets; Maximum: 1,300 Sheets CS 181: Standard: 400 Sheets; Maximum: 1,300 Sheets
Paper Size	5.5" x 8.5" - 11" x 17" (Statement to Ledger)
Paper Weight	16 lb - 28 lb Bond; MPT: 13 lb Bond - 90 lb Index
Input Materials	Bond Paper, Recycled Paper, Transparencies, Envelopes
Paper Output	Up to 250 Sheets (Letter)

## Document Processor

Type / Capacity	RADF Type Document Processor / 50 Sheets (Letter)
Copy Scan Speed	22 ipm
Acceptable Originals / Weights	5.5" x 8.5" - 11" x 17" / 13 lb Bond - 90 lb Index
Duplex	Optional DU-420 Duplex
Paper Size	5.5" x 8.5" - 11" x 17" (Statement to Ledger)
Paper Weight	16 - 28 lb Bond
Duplex Modes	Standard 1:2; 2:2; Book:2; 2:1

## Copy Specifications

Image Mode	Text, Photo, Text/Photo, Auto, Manual
Continuous Copy	1 - 999 / Auto Reset to 1
Additional Copy Features	Auto Center, Magnification and Paper Select, Book Mode, Border Erase, Margin Shift, N-Up Copy, Electronic Sort, Sort Mode, Group Mode
Job Management	Job Interrupt, Job Programs, 100 Department Codes
Magnification / Zoom	Full Size, 5 Reduction, 5 Enlargement Preset Ratios, 25 - 400% in 1 step increments

## Printer Specifications

Controller	PowerPC 440 / 500MHz
PDLs/Emulations	PRESCRIBE, PCL6 (5e, XL), KPDL3 (PS3), KC-GL, IBM ProPrinter X24e, Epson LQ-850, Diablo 630, Line Printer
Memory	Standard 128MB RAM upgradable to 1152MB RAM
Print Resolution	Fast 1200 Mode; 600 x 600 dpi; 300 x 300 dpi
Fonts	136 KPDL3, 80 PCL6, 1 Bitmap
Windows OS Compatibility	Windows 2000 / XP / 2003 / Vista / 2008
Mac OS Compatibility	Mac OS 10.x
UNIX OS Compatibility	Sun OS4.1.x; Solaris 2.x; AIX; HP-UX (LPR)
Interfaces	10/100BaseTX, Hi-Speed USB 2.0, KUIO-LV Slot (1)
Network Print and Supported Protocols	TCP/IP, IPX/SPX, AppleTalk, NetBEUI
Drivers	KX Driver, Mini Driver, PPD for Mac, PPD for UNIX
Utilities	PRESCRIBE Utilities, PDF Direct Print, KMnet Admin, KMnet for Accounting, KMnet Viewer, Status Monitor
Additional Print Features	e-MPS Features (Secure Print, Job Storage, Virtual Mailbox) (requires Optional HD-5A HDD)

## Scan Specifications

Scan Resolutions	200, 300, 400, 600 dpi
Network Scan Speed	Simplex: 22 ipm / Duplex: 11 ipm
File Formats	PDF, TIFF
Connectivity / Supported Protocols	10/100BaseTX / TCP/IP
Scanning Functions	Scan to PC, Scan to e-Mail, TWAIN Scan
Driver	TWAIN Driver

## Fax Specifications

Compatibility	G3 Fax/Network Fax (with Scan System)
Data Compression	JBIG, MMR, MR, MH
Transmission Speed	Approximately 3 Seconds per Page
Fax Memory	Standard 4MB / Maximum 32MB
Driver	KM Network Fax Driver
Fax Functions	Duplex TX/RX, Confidential TX/RX, F-Code RX/TX, Broadcasting, Polling, Memory Reception, One Touch Dialing, Memory/Direct Transmission

## Optional Finisher

Stack / Staple Capacity	500 Sheets / 30 Sheets Letter, 20 Sheets Legal and Ledger
Paper Size	5.5" x 8.5" - 11" x 17" (Statement to Ledger)
Paper Weight	16 - 28 lb Bond
Edge Staple Position	Single Position
Acceptable Weights for Staple	16 - 28 lb Bond

## Optional Paper Drawers

Paper Capacity	300 Sheets
Maximum Drawers	CS 221: Up to two (2) can be installed CS 181: Up to three (3) can be installed
Paper Size	5.5" x 8.5" - 11" x 17"
Paper Weight	16 - 28 lb Bond

## Additional Options

HD-5A Printer Hard Disk Drive; JS-420 Job Separator; 32MB Fax Memory; Printer Memory; IB-23 Secure NIC; Platen Cover; High / Low Copy Stand